



BEYOND SECURITY

KABA®

Round Rose Lever Furniture

240 Series, 270 Series, 280 Series, 740 Series,
Accessories



Mechanics

OCTOBER 2014

Round Rose Lever Furniture

Kaba Australia prides itself on providing quality door furniture that is both functional and stylish. Our round rose lever furniture range features standard and large rose options, escutcheons, turns, blank roses and lever options available in a variety of fashionable configurations and finishes, including those which meet the Australian Standard for disabled access.





INDEX

Round Rose Lever Furniture

- 2 Finishes, Fire Rating and Disbaled Access
- 3 Lever furniture overview

240 Series

- 4 240 Series product information
- 5-9 240 Series lever range

270 Series

- 10 270 Series product information
- 11-13 270 Series lever range

280 Series

- 14 280 Series product information
- 15 280 Series lever range

740 Series

- 16 740 Series product information
- 17-21 740 Series lever range

Accessories

- 22-24 Escutcheons and turns
- 25 Locks and latches



We offer an elegant range of designs and finishes to suit commercial or residential applications with all of our round rose furniture being designed for use with Kaba mortice locks and latches or comparable locks and tubular latches.

Finishes



SCP Satin Chrome Plate



CP Chrome Plate



SSS Satin Stainless Steel

Fire Rating



The Kaba Round Rose Lever Furniture has been successfully tested on fire door assemblies to comply with Australian Standard AS1905-1-2005 Part 1, Fire Resistant Door Sets. All testing is carried out by independent laboratories.

Disabled Access



For installations where compliance to AS1428 - Design for Access and Mobility is required, please select from the lever designs bearing this symbol.



240 Series

A high quality, cost effective range of handles for commercial and domestic applications.

270 Series

A premium, all brass furniture range specifically suited to high traffic areas or for extreme climate conditions.

280 Series

A premium quality range of door furniture constructed of a solid brass mounting plate and 316 grade stainless steel dress ring and lever. This range is suited for use in coastal areas or harsh climate conditions.

740 Series

A larger **65mm** round rose features on this high quality, cost effective range of handles.

Accessories

Accessory Range includes - escutcheons, turns, turn snibs, emergency turns, blank roses and square roses available to complement the product range, with these accessories suitable for all four series of lever furniture.

Privacy Function

Privacy function is available on the 240, 280 and 740 series.



SQUARE ROSE

Shown on 240 Series lever. Also available in privacy function.



PRIVACY INSIDE

Shown as 240 rose



PRIVACY OUTSIDE

Shown as 240 rose

Round Rose Lever Furniture

240 Series - Lever Handles

The Kaba 240 Series is a high quality, cost effective range of handles for commercial and domestic applications. Suitable for use on internal doors and door not subject to a harsh environment. Levers are fitted on a 50mm round rose mounting plate projecting 12mm from the door. Designed to suit Kaba mortice locks and latches, the 240 Series is also compatible with comparable locks and tubular latches.

Dimensions

50mm diameter (overall 53mm including dress ring), 12mm thick rose, and 41mm fixing centre with a suitable mortice lock or latch - sold separately.

Fixing

Designed with a concealed fixing, secured back to back by two M4 cross recessed countersunk screws in an optional vertical or horizontal fixing pattern.

Construction

The 240 Series is constructed using a zinc die-cast rose, a brass dress ring, a corrosion resistant stainless steel cam and a steel wire torsion spring. Levers are made from a combination of zinc die cast or solid forged brass.

Handing

Roses are non-handed and in most cases the levers can be reversed (refer to lever designs for more information).

Door Thickness

Standard models are designed to suit a 32mm-50mm thick door as standard.

Fire Rating

All 240 Series Lever Handles are Fire Rated and comply with Australian Standard AS1905-1-2005 Part 1.

FIRE RATED



Disabled Access

A selection of Lever Handles that comply to AS1428 - Design for access and mobility will be shown with this symbol.



Functions

Standard

Sold as a pair including spindle and fixing screws - less latch.

Privacy

Sold as a pair including spindle, fixing screws and a 60mm privacy latch.

Half Set

Sold as a pair 240H-**

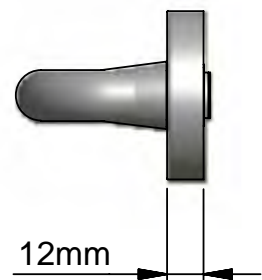
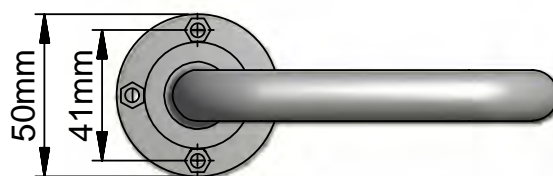
Fixed Lever

Sold as a pair 240F-**

Finishes

Satin Chrome Plate	SCP
Chrome Plate	CP

For matching escutcheons, turns and blank rose, including thick door kits, please refer to the lever furniture accessories section.

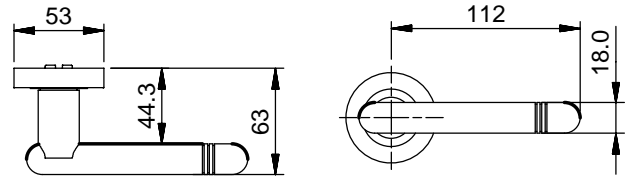


SPECIFICATION

The door furniture should be a 50mm round rose projecting 12mm from the face of the door. The base shall be fabricated from pressure die-cast zinc with a corrosion resistant stainless steel cam and a steel wire torsion spring. The rose shall have an 8mm deep bearing surface. Fixing screws are to be M4 with cross recessed heads, 41mm apart and concealed on both sides of the door.

Round Rose Lever Furniture

240 Series - Lever Handle options



DIMENSIONS	LENGTH	PROJECTION	CLEARANCE
	112mm	63mm	44.3mm

STANDARD
240-02SCP
240-02CP

PRIVACY
240P-02SCP
240P-02CP

HALF
240H-02SCP
240H-02CP

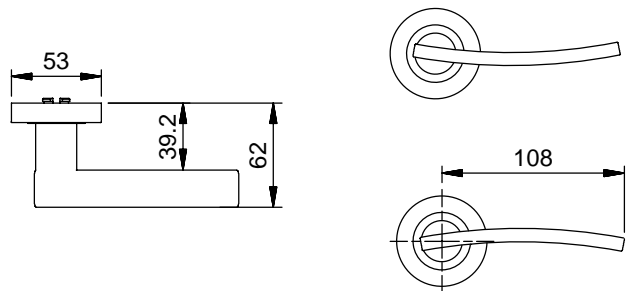
FIXED
240F-02SCP
240F-02CP

240-02



Shown as 05

Shown as 50



DIMENSIONS	LENGTH	PROJECTION	CLEARANCE
	108mm	62mm	39.2mm

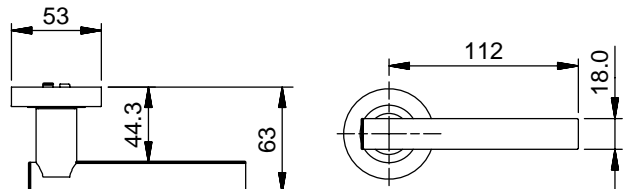
STANDARD
240-05/50SCP
240-05/50CP

PRIVACY
240P-05/50SCP
240P-05/50CP

HALF
240H-05/50SCP
240H-05/50CP

FIXED
240F-05/50SCP
240F-05/50CP

240-05/50



DIMENSIONS	LENGTH	PROJECTION	CLEARANCE
	112mm	63mm	44.3mm

STANDARD
240-11SCP
240-11CP

PRIVACY
240P-11SCP
240P-11CP

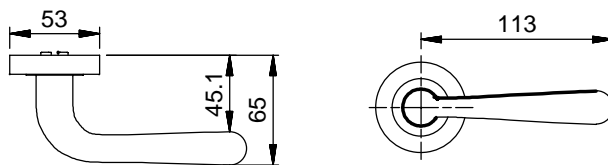
HALF
240H-11SCP
240H-11CP

FIXED
240F-11SCP
240F-11CP

240-11

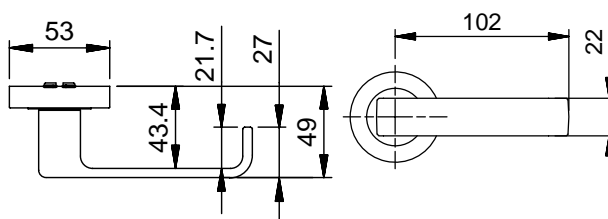
Round Rose Lever Furniture

240 Series - Lever Handle options



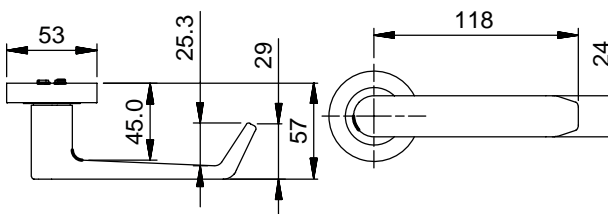
DIMENSIONS	LENGTH	PROJECTION	CLEARANCE
	113mm	65mm	45.1mm

STANDARD 240-18SCP 240-18CP	PRIVACY 240P-18SCP 240P-18CP	HALF 240H-18SCP 240H-18CP	FIXED 240F-18SCP 240F-18CP	240-18
-----------------------------------	------------------------------------	---------------------------------	----------------------------------	---------------



DIMENSIONS	LENGTH	PROJECTION	CLEARANCE
	102mm	49mm	43.4mm

STANDARD 240-30SCP 240-30CP	PRIVACY 240P-30SCP 240P-30CP	HALF 240H-30SCP 240H-30CP	FIXED 240F-30SCP 240F-30CP	240-30
-----------------------------------	------------------------------------	---------------------------------	----------------------------------	---------------

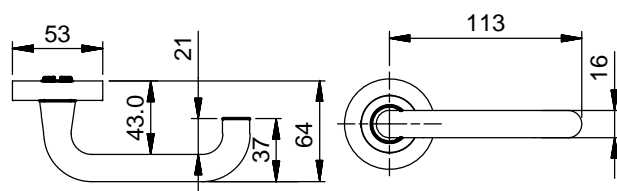


DIMENSIONS	LENGTH	PROJECTION	CLEARANCE
	118mm	57mm	45mm

STANDARD 240-32SCP 240-32CP	PRIVACY 240P-32SCP 240P-32CP	HALF 240H-32SCP 240H-32CP	FIXED 240F-32SCP 240F-32CP	240-32
-----------------------------------	------------------------------------	---------------------------------	----------------------------------	---------------

Round Rose Lever Furniture

240 Series - Lever Handle options



DIMENSIONS	LENGTH	PROJECTION	CLEARANCE
	113mm	64mm	43mm

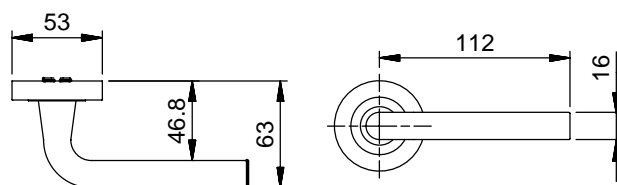
STANDARD
240-33SCP
240-33CP

PRIVACY
240P-33SCP
240P-33CP

HALF
240H-33SCP
240H-33CP

FIXED
240F-33SCP
240F-33CP

240-33



DIMENSIONS	LENGTH	PROJECTION	CLEARANCE
	112mm	63mm	46.8mm

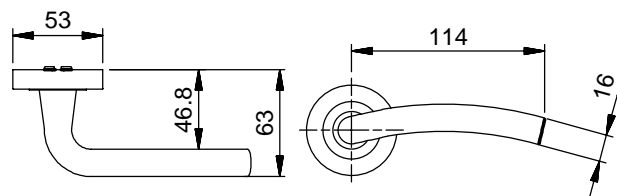
STANDARD
240-34SCP
240-34CP

PRIVACY
240P-34SCP
240P-34CP

HALF
240H-34SCP
240H-34CP

FIXED
240F-34SCP
240F-34CP

240-34



DIMENSIONS	LENGTH	PROJECTION	CLEARANCE
	114mm	63mm	46.8mm

STANDARD
240-35SCP
240-35CP

PRIVACY
240P-35SCP
240P-35CP

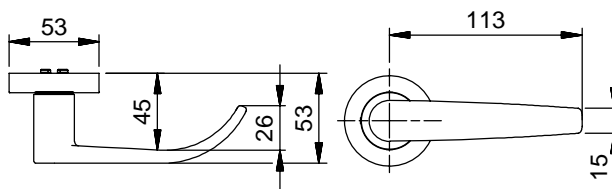
HALF
240H-35SCP
240H-35CP

FIXED
240F-35SCP
240F-35CP

240-35

Round Rose Lever Furniture

240 Series - Lever Handle options



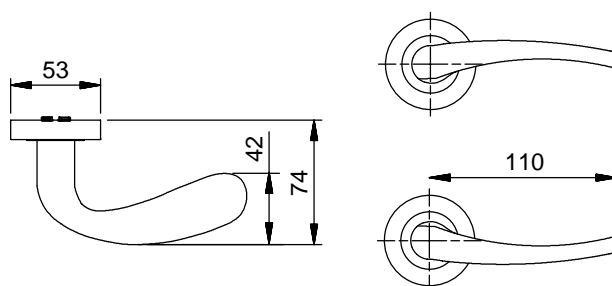
DIMENSIONS	LENGTH	PROJECTION	CLEARANCE
	113mm	53mm	45mm

STANDARD	PRIVACY	HALF	FIXED	240-36
240-36SCP	240P-36SCP	240H-36SCP	240F-36SCP	
Note: other finishes available as special order item and minimum order quantities apply				



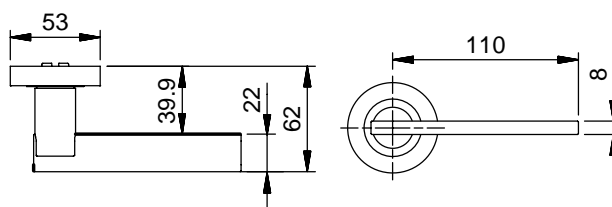
Shown as 45

Shown as 54



DIMENSIONS	LENGTH	PROJECTION	CLEARANCE
	110mm	74mm	NA

STANDARD	PRIVACY	HALF	FIXED	240-45/54
240-45/54SCP	240P-45/54SCP	240H-45/54SCP	240F-45/54SCP	
240-45/54CP	240P-45/54CP	240H-45/54CP	240F-45/54CP	

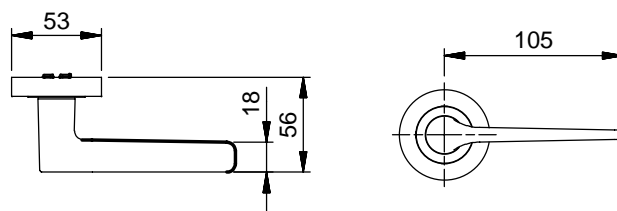


DIMENSIONS	LENGTH	PROJECTION	CLEARANCE
	110mm	62mm	39.9mm

STANDARD	PRIVACY	HALF	FIXED	240-66
240-66SCP	240P-66SCP	240H-66SCP	240F-66SCP	
240-66CP	240P-66CP	240H-66CP	240F-66CP	

Round Rose Lever Furniture

240 Series - Lever Handle options



DIMENSIONS	LENGTH	PROJECTION	CLEARANCE
	105mm	56mm	NA

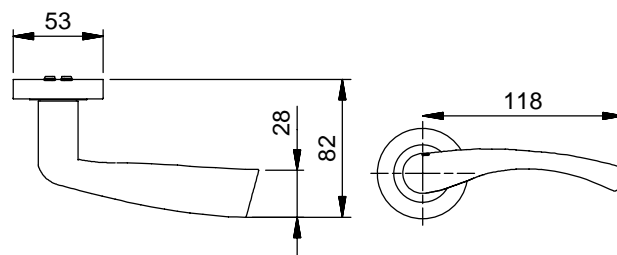
STANDARD
240-72SCP
240-72CP

PRIVACY
240P-72SCP
240P-72CP

HALF
240H-72SCP
240H-72CP

FIXED
240F-72SCP
240F-72CP

240-72



DIMENSIONS	LENGTH	PROJECTION	CLEARANCE
	118mm	82mm	NA

STANDARD
240-96SCP
240-96CP

PRIVACY
240P-96SCP
240P-96CP

HALF
240H-96SCP
240H-96CP

FIXED
240F-96SCP
240F-96CP

240-96

Round Rose Lever Furniture

270 Series - Lever Handles

The 270 Series is a high quality range of round rose door furniture constructed of a solid brass mounting plate. Designed for commercial applications, this range is better suited for heavy traffic or external applications. Levers are fitted on a 50mm round rose mounting plate projecting 12mm from the door and are designed for use with Kaba mortice locks and latches and are also compatible with similar locks and tubular latches.

Dimensions

50mm diameter (overall 53mm including dress ring), 12mm thick rose, and 41mm fixing centre with a suitable mortice lock or latch - sold separately.

Fixing

Designed with concealed fixing secured back to back by two M4 cross recessed countersunk screws in an optional vertical or horizontal fixing pattern.

Construction

The 270 Series is constructed of a solid brass mounting plate, in a corrosion resistant stainless steel cam and a steel wire torsion spring. Lever options are made from solid forged brass.

Handing

Roses are non-handed and in most cases the levers can be reversed (refer to lever designs for more information).

Door Thickness

Standard models are designed to suit a 32mm-50mm thick door as standard.

Fire Rating

All 270 Series Lever Handles are Fire Rated and comply with Australian Standard AS1905-1-2005 Part 1.

FIRE RATED 

Disabled Access

A selection of Lever Handles that comply to AS1428 - Design for access and mobility will be shown with this symbol.



Functions

Standard

Sold as a pair including spindle and fixing screws - less latch.

Privacy

270 Series not available in privacy function.

Half Set

Sold as a pair 270H-**

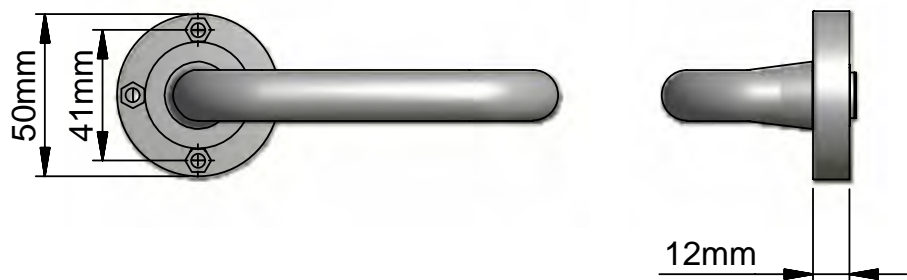
Fixed Lever

Sold as a pair 270F-**

Finishes

Satin Chrome Plate	SCP
Chrome Plate	CP

For matching escutcheons, turns and blank rose, including thick door kits, please refer to the lever furniture accessories section.

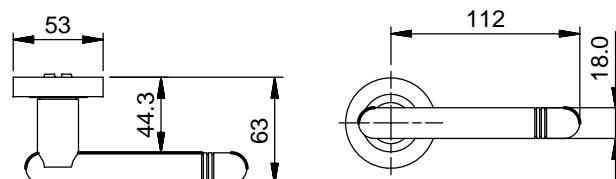


SPECIFICATION

The door furniture should be a 50mm round rose projecting 12mm from the face of the door. The base shall be fabricated from solid brass with a corrosion resistant stainless steel cam and a steel wire torsion spring. The rose shall have an 8mm deep bearing surface. Fixing screws are to be M4 with cross recessed heads, 41mm apart and concealed on both sides of the door.

Round Rose Lever Furniture

270 Series - Lever Handle options



DIMENSIONS	LENGTH	PROJECTION	CLEARANCE
	112mm	63mm	44.3mm

STANDARD
270-02SCP
270-02CP

HALF
270H-02SCP
270H-02CP

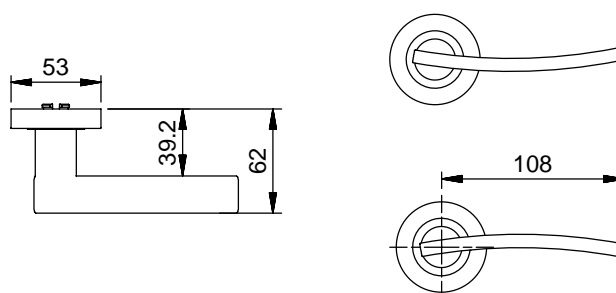
FIXED
270F-02SCP
270F-02CP

270-02



Shown as 05

Shown as 50



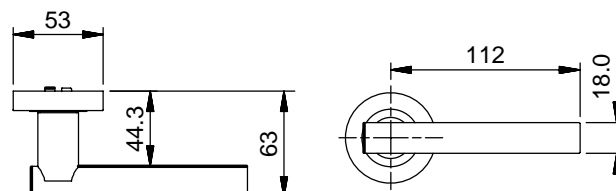
DIMENSIONS	LENGTH	PROJECTION	CLEARANCE
	108mm	62mm	39.2mm

STANDARD
270-05/50SCP
270-05/50CP

HALF
270H-05/50SCP
270H-05/50CP

FIXED
270F-05/50SCP
2740F-05/50CP

270-05/50



DIMENSIONS	LENGTH	PROJECTION	CLEARANCE
	112mm	63mm	44.3mm

STANDARD
270-11SCP
270-11CP

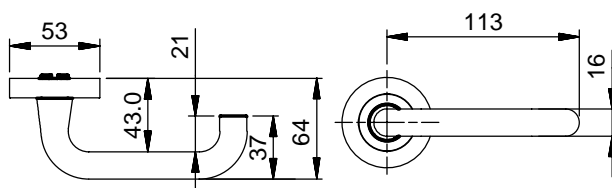
HALF
270H-11SCP
270H-11CP

FIXED
270F-11SCP
270F-11CP

240-11

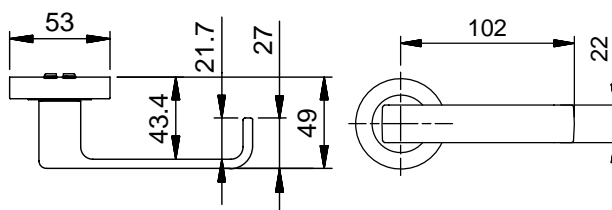
Round Rose Lever Furniture

270 Series - Lever Handle options



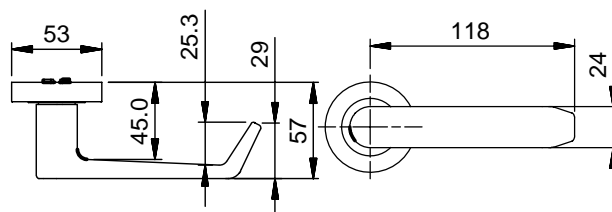
DIMENSIONS	LENGTH	PROJECTION	CLEARANCE
	113mm	64mm	43mm

STANDARD 270-25SCP 270-25CP	HALF 270H-25SCP 270H-25CP	FIXED 270F-25SCP 270F-25CP	270-25
-----------------------------------	---------------------------------	----------------------------------	---------------



DIMENSIONS	LENGTH	PROJECTION	CLEARANCE
	102mm	49mm	43.4mm

STANDARD 270-30SCP 270-30CP	HALF 270H-30SCP 270H-30CP	FIXED 270F-30SCP 270F-30CP	270-30
-----------------------------------	---------------------------------	----------------------------------	---------------



DIMENSIONS	LENGTH	PROJECTION	CLEARANCE
	118mm	57mm	45mm

STANDARD 270-32SCP 270-32CP	HALF 270H-32SCP 270H-32CP	FIXED 270F-32SCP 270F-32CP	270-32
-----------------------------------	---------------------------------	----------------------------------	---------------

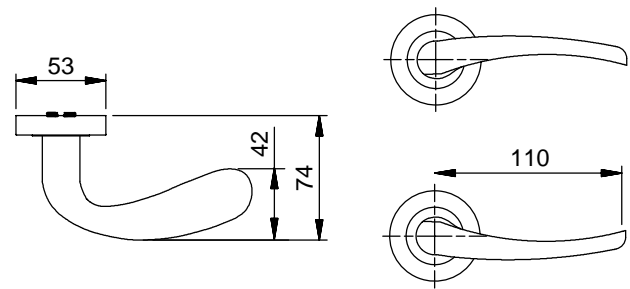
Round Rose Lever Furniture

270 Series - Lever Handle options



Shown as 45

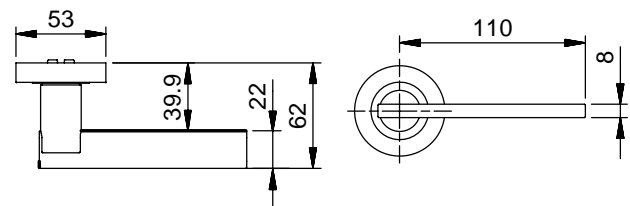
Shown as 54



DIMENSIONS	LENGTH	PROJECTION	CLEARANCE
	110mm	74mm	NA

STANDARD 270-49/94SCP 270-49/94CP	HALF 270H-49/94SCP 270H-49/94CP	FIXED 270F-49/94SCP 270F-49/94CP
---	---------------------------------------	--

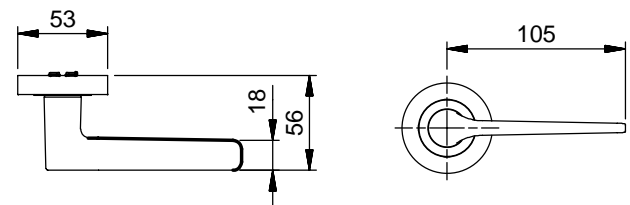
270-49/94



DIMENSIONS	LENGTH	PROJECTION	CLEARANCE
	110mm	62mm	39.9mm

STANDARD 270-66SCP 270-66CP	HALF 270H-66SCP 270H-66CP	FIXED 270F-66SCP 270F-66CP
-----------------------------------	---------------------------------	----------------------------------

270-66



DIMENSIONS	LENGTH	PROJECTION	CLEARANCE
	105mm	56mm	NA

STANDARD 270-72SCP 270-72CP	HALF 270H-72SCP 270H-72CP	FIXED 270F-72SCP 270F-72CP
-----------------------------------	---------------------------------	----------------------------------

270-72

Round Rose Lever Furniture

280 Series - Lever Handles

The 280 Series is a high quality range of round rose door furniture constructed of a solid brass mounting plate and 316 grade stainless steel dress ring and lever. The range has been designed for commercial applications and is suited for use in coastal or harsh climate conditions. Levers are fitted on a 50mm round rose mounting plate projecting 12mm from the door and are designed for use with Kaba mortice locks and latches and are also compatible with similar locks and tubular latches.

Dimensions

50mm diameter (overall, 53mm including dress ring), 12mm thick rose, and 41mm fixing centre with a suitable mortice lock or latch - sold separately.

Fixing

Designed with concealed fixing secured back to back by two M4 cross recessed countersunk screws in an optional vertical or horizontal fixing pattern.

Construction

The 280 Series is constructed of a solid brass mounting plate, a 316 grade stainless steel dress ring, including a corrosion resistant stainless steel cam, and a steel wire torsion spring. Levers are made from solid or tubular 316 grade stainless steel.

Handing

Roses are non-handed and in most cases the levers can be reversed (refer to lever designs for more information).

Door Thickness

Standard models are designed to suit a 32mm-50mm thick door as standard.

Fire Rating

All 280 Series Lever Handles are Fire Rated and comply with Australian Standard AS1905-1-2005 Part 1.



Disabled Access

A selection of Lever Handles that comply to AS1428 - Design for access and mobility will be shown with this symbol.



Functions

Standard

Sold as a pair including spindle and fixing screws - less latch.

Privacy

Sold as a pair including spindle, fixing screws and a 60mm privacy latch.

Half Set

Sold as a pair 280H-**

Fixed Lever

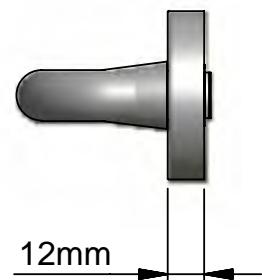
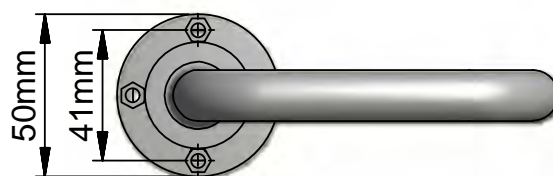
Sold as a pair 280F-**

Finishes

Satin Stainless Steel

SSS

For matching escutcheons, turns and blank rose, including thick door kits refer to the lever furniture accessories section.

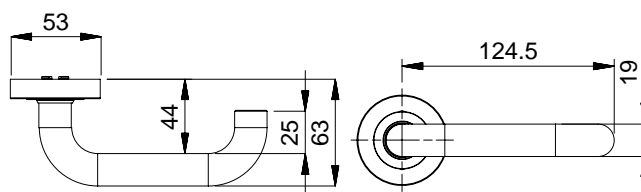


SPECIFICATION

The door furniture should be a 50mm round rose projecting 12mm from the face of the door. The base shall be fabricated from solid brass with 316 grade stainless steel dress ring and lever, a corrosion resistant stainless steel cam and a steel wire torsion spring. The rose shall have an 8mm deep bearing surface. Fixing screws are to be M4 with cross recessed heads, 41mm apart and concealed on both sides of the door.

Round Rose Lever Furniture

280 Series - Lever Handle options



DIMENSIONS	LENGTH	PROJECTION	CLEARANCE
	124.5mm	63mm	44mm

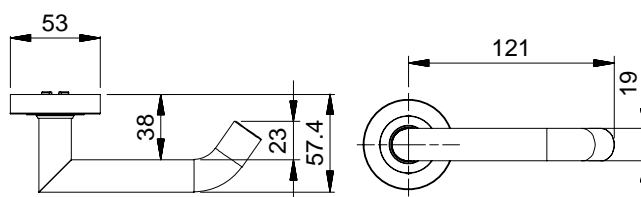
STANDARD
280-20SSS

PRIVACY
280P-20SSS

HALF
280H-20SSS

FIXED
280F-20SSS

280-20



DIMENSIONS	LENGTH	PROJECTION	CLEARANCE
	121mm	57.4mm	38mm

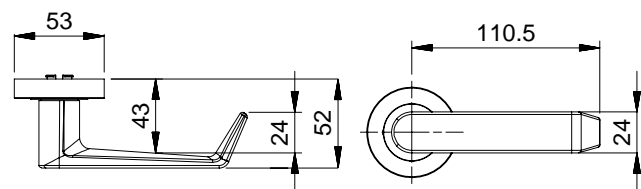
STANDARD
280-21SSS

PRIVACY
280P-21SSS

HALF
280H-21SSS

FIXED
280F-21SSS

280-21



DIMENSIONS	LENGTH	PROJECTION	CLEARANCE
	110.5mm	52mm	43mm

STANDARD
280-32SSS

PRIVACY
280P-32SSS

HALF
280H-32SSS

FIXED
280F-32SSS

280-32S

Round Rose Lever Furniture

740 Series - Lever Handles

The 740 Series is a high quality, cost effective range of round rose door furniture, featuring a larger rose, for commercial and domestic applications. Levers are mounted on a 65mm round rose projecting 12mm from the door and are designed for use with Kaba mortice locks and latches and are also compatible with similar locks and tubular latches. Also designed for retro fitting over 54mm holes.

Dimensions

65mm diameter (overall, 68mm including dress ring), 12mm thick rose, and 41mm fixing centre with a suitable mortice lock or latch - sold separately.

Fixing

Designed with a concealed fixing secured back to back by two M4 cross recessed countersunk screws in an optional vertical or horizontal fixing pattern.

Construction

The 740 Series is constructed from a zinc die-cast rose, a brass dress ring, a corrosion resistant stainless steel cam and a steel wire torsion spring. Levers are made from a combination of zinc die cast or solid forged brass.

Handing

Roses are non-handed and in most cases the levers can be reversed (refer to lever designs for more information).

Door Thickness

Standard models are designed to suit a 32mm-50mm thick door as standard.

Fire Rating

All 740 Series Lever Handles are Fire Rated and comply with Australian Standard AS1905-1-2005 Part 1.

FIRE RATED



Disabled Access

A selection of Lever Handles that comply to AS1428 - Design for access and mobility will be shown with this symbol.



Functions

Standard

Sold as a pair including spindle and fixing screws - less latch.

Privacy

Sold as a pair including spindle, fixing screws and a 60mm privacy latch.

Half Set

Sold as a pair 740H-**

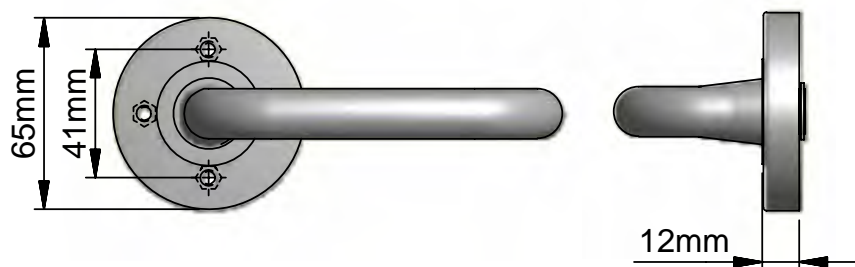
Fixed Lever

Sold as a pair 740F-**

Finishes

Satin Chrome Plate	SCP
Chrome Plate	CP

For matching escutcheons, turns and blank rose, including thick door kits refer to the lever furniture accessories section.

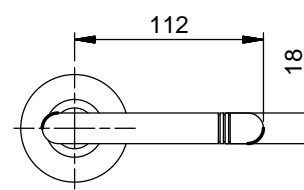
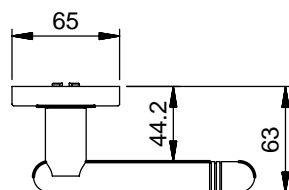


SPECIFICATION

The door furniture should be a 65mm round rose projecting 12mm from the face of the door. The base shall be fabricated from pressure die-cast zinc with a corrosion resistant stainless steel cam and a steel wire torsion spring. The rose shall have an 8mm deep bearing surface. Fixing screws are to be M4 with cross recessed heads, 41mm apart and concealed on both sides of the door.

Round Rose Lever Furniture

740 Series - Lever Handle options



DIMENSIONS	LENGTH	PROJECTION	CLEARANCE
	112mm	63mm	44.2mm

STANDARD
740-02SCP
740-02CP

PRIVACY
740P-02SCP
740P-02CP

HALF
740H-02SCP
740H-02CP

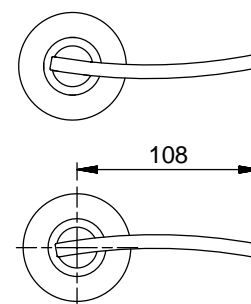
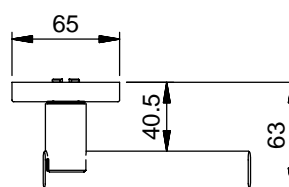
FIXED
740F-02SCP
740F-02CP

740-02



Shown as 05

Shown as 50



DIMENSIONS	LENGTH	PROJECTION	CLEARANCE
	108mm	62mm	40.5mm

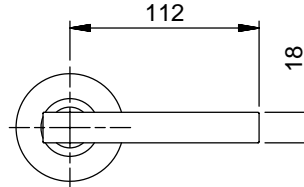
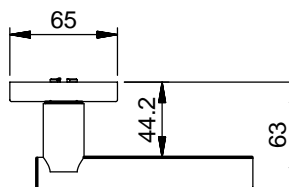
STANDARD
740-05/50SCP
740-05/50CP

PRIVACY
740P-05/50SCP
740P-05/50CP

HALF
740H-05/50SCP
740H-05/50CP

FIXED
740F-05/50SCP
740F-05/50CP

740-05/50



DIMENSIONS	LENGTH	PROJECTION	CLEARANCE
	112mm	63mm	44.2mm

STANDARD
740-11SCP
740-11CP

PRIVACY
740P-11SCP
740P-11CP

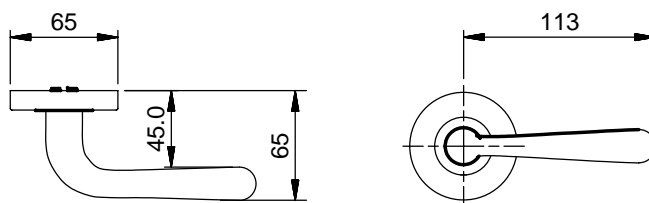
HALF
740H-11SCP
740H-11CP

FIXED
740F-11SCP
740F-11CP

740-11

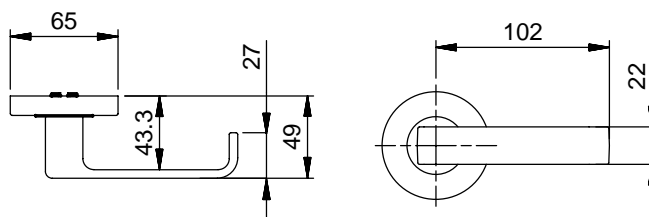
Round Rose Lever Furniture

740 Series - Lever Handle options



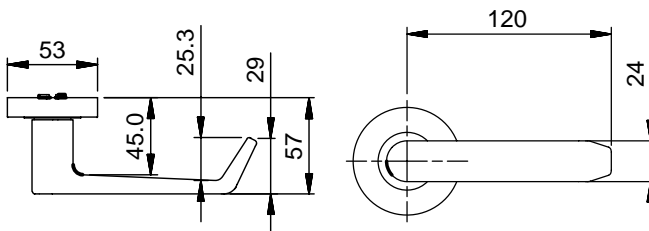
DIMENSIONS	LENGTH	PROJECTION	CLEARANCE
	113mm	65mm	45mm

STANDARD 740-18SCP 740-18CP	PRIVACY 740P-18SCP 740P-18CP	HALF 740H-18SCP 740H-18CP	FIXED 740F-18SCP 740F-18CP	740-18
-----------------------------------	------------------------------------	---------------------------------	----------------------------------	---------------



DIMENSIONS	LENGTH	PROJECTION	CLEARANCE
	102mm	49mm	43.3mm

STANDARD 740-30SCP 740-30CP	PRIVACY 740P-30SCP 740P-30CP	HALF 740H-30SCP 740H-30CP	FIXED 740F-30SCP 740F-30CP	740-30
-----------------------------------	------------------------------------	---------------------------------	----------------------------------	---------------

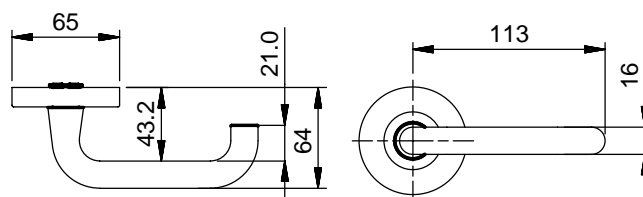


DIMENSIONS	LENGTH	PROJECTION	CLEARANCE
	120mm	57mm	44.9mm

STANDARD 740-32SCP 740-32CP	PRIVACY 740P-32SCP 740P-32CP	HALF 740H-32SCP 740H-32CP	FIXED 740F-32SCP 740F-32CP	740-32
-----------------------------------	------------------------------------	---------------------------------	----------------------------------	---------------

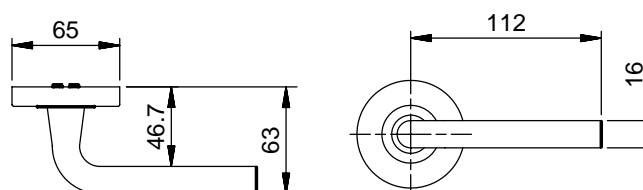
Round Rose Lever Furniture

740 Series - Lever Handle options



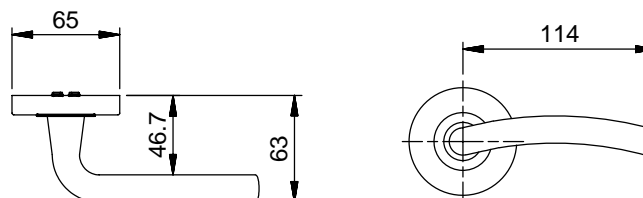
DIMENSIONS	LENGTH	PROJECTION	CLEARANCE
	113mm	64mm	43.2mm

STANDARD	PRIVACY	HALF	FIXED	
740-33SCP	740P-33SCP	740H-33SCP	740F-33SCP	740-33
740-33CP	740P-33CP	740H-33CP	740F-33CP	



DIMENSIONS	LENGTH	PROJECTION	CLEARANCE
	112mm	63mm	46.7mm

STANDARD	PRIVACY	HALF	FIXED	
740-34SCP	740P-34SCP	740H-34SCP	740F-34SCP	740-34
740-34CP	740P-34CP	740H-34CP	740F-34CP	

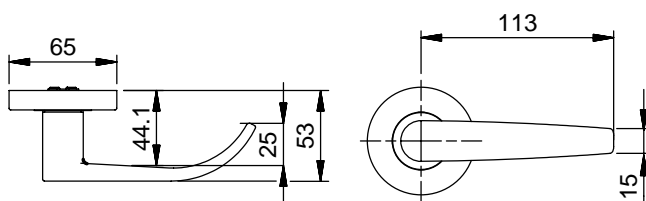


DIMENSIONS	LENGTH	PROJECTION	CLEARANCE
	114mm	63mm	46.7mm

STANDARD	PRIVACY	HALF	FIXED	
740-35SCP	740P-35SCP	740H-35SCP	740F-35SCP	740-35
740-35CP	740P-35CP	740H-35CP	740F-35CP	

Round Rose Lever Furniture

740 Series - Lever Handle options



DIMENSIONS	LENGTH	PROJECTION	CLEARANCE
	113mm	53mm	44.1mm

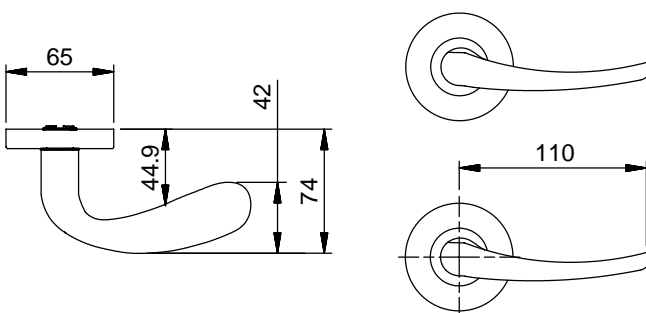
STANDARD 740-36SCP	PRIVACY 740P-36SCP	HALF 740H-36SCP	FIXED 740F-36SCP	740-36
Note: other finishes available as special order item and minimum order quantities apply				



Shown as 45

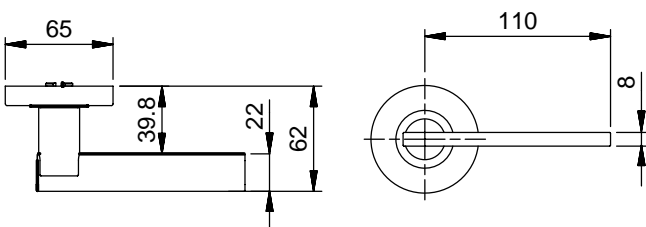


Shown as 54



DIMENSIONS	LENGTH	PROJECTION	CLEARANCE
	110mm	74mm	NA

STANDARD 740-45/54SCP 740-45/54CP	PRIVACY 740P-45/54SCP 740P-45/54CP	HALF 740H-45/54SCP 740H-45/54CP	FIXED 740F-45/54SCP 740F-45/54CP	740-45/54
---	--	---------------------------------------	--	------------------

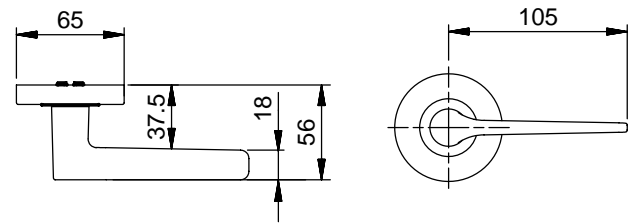


DIMENSIONS	LENGTH	PROJECTION	CLEARANCE
	110mm	62mm	39.8mm

STANDARD 740-66SCP 740-66CP	PRIVACY 740P-66SCP 740P-66CP	HALF 740H-66SCP 740H-66CP	FIXED 740F-66SCP 740F-66CP	740-66
-----------------------------------	------------------------------------	---------------------------------	----------------------------------	---------------

Round Rose Lever Furniture

740 Series - Lever Handle options



DIMENSIONS	LENGTH	PROJECTION	CLEARANCE
	105mm	56mm	NA

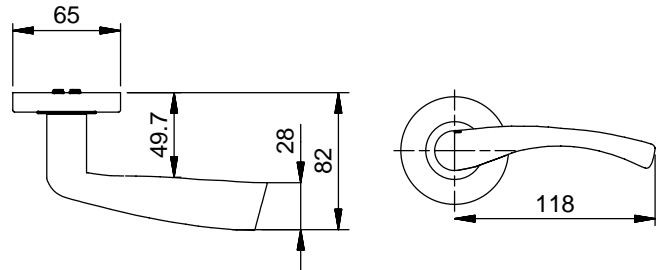
STANDARD
740-72SCP
740-72CP

PRIVACY
740P-72SCP
740P-72CP

HALF
740H-72SCP
740H-72CP

FIXED
740F-72SCP
740F-72CP

740-72



DIMENSIONS	LENGTH	PROJECTION	CLEARANCE
	118mm	82mm	NA

STANDARD
740-96SCP
740-96CP

PRIVACY
740P-96SCP
740P-96CP

HALF
740H-96SCP
740H-96CP

FIXED
740F-96SCP
740F-96CP

740-96

Accessories

Escutcheons and Turns

Cylinder Escutcheons

FA270

Round rose
oval cylinder escutcheon

Dia	Thick
50mm	7.5mm



CODE	FINISH
FA270SCP	SCP
FA270CP	CP

FA270E

Round rose
euro-cylinder escutcheon

Dia	Thick
50mm	7.5mm



CODE	FINISH
FA270ESCP	SCP

FA280

Round rose
oval cylinder escutcheon

Dia	Thick
50mm	7.5mm



CODE	FINISH
FA280SSS	SSS

FA300

Round rose
oval cylinder escutcheon

Dia	Thick
48mm	10mm



CODE	FINISH
FA300SCP	SCP

Square Rose

FA400

Square rose
for lever furniture

High	Wide	Thick
55mm	55mm	11mm



CODE	FINISH
FA400SCP	SCP
FA400CP	CP

FA400P

Square rose - privacy
function for lever furniture

High	Wide	Thick
55mm	55mm	11mm



CODE	FINISH
FA400PSCP	SCP
FA400PCP	CP

FA401

Square rose
for escutcheons and turns

High	Wide	Thick
50mm	50mm	7mm



CODE	FINISH
FA401SCP	SCP
FA401CP	CP

Accessories

Escutcheons and Turns

Surface Fixed Turns

FA271

Round rose
Emergency slot turn

Dia	Thick
50mm	7.5mm



CODE	FINISH
FA271SCP	SCP
FA271CP	CP

FA272

Round rose
Turn snib

Dia	Thick
50mm	7.5mm



CODE	FINISH
FA272SCP	SCP
FA272CP	CP

FA279

Round rose - indicating
Emergency slot turn

Dia	Thick
50mm	7.5mm



CODE	FINISH
FA279SCP	SCP
FA279CP	CP

FA279T

Round rose - indicating
Emergency turn knob

Dia	Thick
50mm	7.5mm



CODE	FINISH
FA279TSCP	SCP
FA279TCP	CP

FA281

Round rose
Emergency slot turn

Dia	Thick
50mm	7.5mm



CODE	FINISH
FA281SSS	SSS

FA282

Round rose
Turn snib

Dia	Thick
50mm	7.5mm



CODE	FINISH
FA282SSS	SSS

FA289

Round rose - indicating
Emergency slot turn

Dia	Thick
50mm	7.5mm



CODE	FINISH
FA289SSS	SSS

Blank Rose

FA239

Blank rose 50mm

Dia	Thick
50mm	9mm



CODE	FINISH
FA239SCP	SCP
FA239CP	CP

FA709

Blank rose 64mm

Dia	Thick
64mm	14mm



CODE	FINISH
FA709SCP	SCP
FA709CP	CP

Accessories

Escutcheons and Turns

Case Fixed Turn

FA305

Standard turn snib

High	Wide	Thick
N/A	N/A	N/A



CODE	FINISH
FA305SCP	SCP
FA305CP	CP

FA308

Clutching case fix

High	Wide	Thick
N/A	N/A	N/A



CODE	FINISH
FA308CTSCP	SCP

FA311

Case fixed snib lever

High	Wide	Thick
52.5mm	14mm	12.7mm



CODE	FINISH
FA311SCP	SCP

FA272DA

DA turn with escutcheon

High	Wide	Thick
52.5mm	14mm	12.7mm



CODE	FINISH
FA272DASCP	SCP
FA272DACP	CP

Lever Furniture Spare Parts

PRODUCT CODE	DESCRIPTION
SCREW PACKS	
FA200	Screw pack 240/270/280 & 740 - each
SCREWPack 1/2	Screw pack - half set 240/270/280 & 740 - each
CAMS	
230-008	Cam to suit 240/270/280 & 740 series
400-033	Cam - fixed for 100/600 & round rose furniture
PRIVACY PINS	
D014SCP	AA650 privacy pin, standard, SCP
410-053S	AA650 privacy pin, suit 30 lever, SCP
MISCELLANEOUS	
230-000	Lever return spring torsion 29mm diameter x 4.8mmL x 1.6mmW
230-014	Spindle - solid 7.6mm square x 70mm long
230-018	Bush - black plastic suit 200 series privacy

Accessories

Locks and Latches

Tubular Latchbolts

AA300

Latchbolt - tubular

To suit furniture with horizontal fixing screw centres of 39mm to 42mm.

60mm backset.

T shape strike plate length 69mm, width 28mm, lip length 47mm.



CODE	FINISH
AA300SSS	SSS
AA300PSS	PSS

AA440

Latchbolt - tubular privacy bolt

60mm backset.

Strike plate length 51mm, width 27mm.

Spindle: accepts a 4mm square or flat bar spindle.



CODE	FINISH
AA440SSS	SSS
AA440PSS	PSS

AA650

Latchbolt - tubular privacy

60mm backset.

T shape strike plate length 51mm, width 27mm.

Suits: 240, 270, 280 and 740 series.



CODE	FINISH
AA650SSS	SSS
AA650PSS	PSS

Round Rose Lever Furniture

Notes
